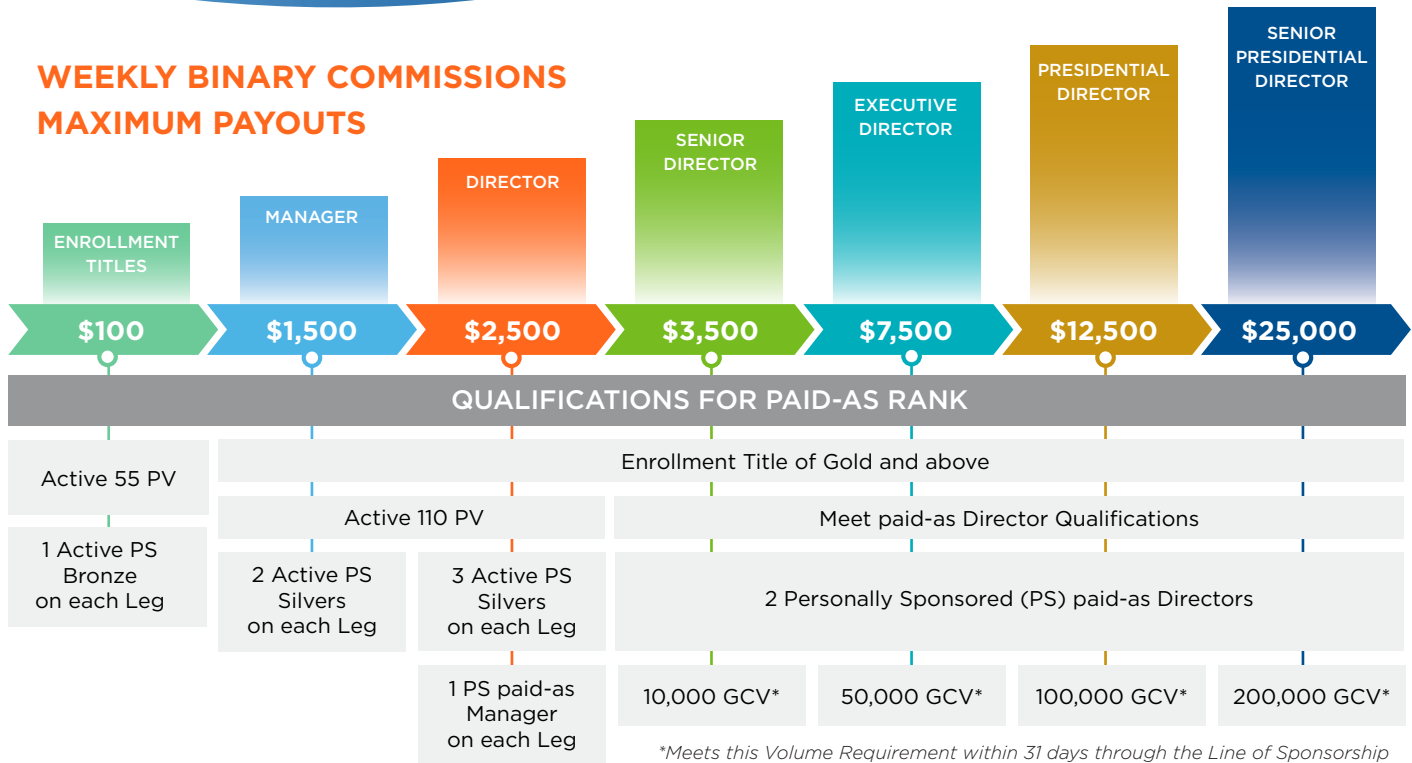


# Compensation Plan Enhancements

As LifeWave continues to explode across the globe, we search for new and innovative ways to maximize your opportunity and strengthen your financial possibilities. With weekly maximum payouts by paid-as rank and fair base-line qualifications for matching bonuses, you are in the driver's seat when it comes to your earning potential!



**Volume Maturity Rule & Cyclable Volume Rule:** Excess cyclable volume from both power & profit legs is consumed each week based on maximum payout thresholds at a 2:1 ratio for paid-as Managers and above. Paid-as Managers will be excluded from the volume cyclable volume rule for the first 52 weeks from enrollment date. Volume in both power and profit legs are consumed once it matures to over 52 weeks old.

A Member must be "binary qualified" to earn any Binary Commissions. To be binary qualified, a member must meet the active and structural requirements of an Enrollment Title (see above) and have at least 660 BV on the power (strong) leg and 330 BV on the profit (weak) leg.

## UNLIMITED MATCHING BONUSES

As a paid-as Manager or above you can qualify to earn a 20-25% match of the Weekly Binary Commissions of your Personally Sponsored (PS) distributor(s) when you meet the below qualifications. There are no maximum payouts on Matching Bonus and the **earning potential is unlimited!**

LEVELS	PERCENTAGE MATCH	QUALIFICATIONS
1st	25%	Active 110 PV Paid-as Manager or Above
2nd	20%	Active 110 PV Paid-as Manager or Above Minimum 6 cycles in paid commissions weekly
3rd	20%	Active 110 PV 3 Active PS Silver+ on each Leg. 1 PS Distributor earning Level 2 matching on each Leg. Minimum 10 cycles in paid commissions weekly



Here are a few terms that are helpful when learning about Weekly Maximum Payouts on Binary Commissions & Matching Bonuses:

- Enrollment Title:** One of the statuses a distributor can have is based on the kit they enrolled/upgraded with when joining LifeWave. Enrollment Titles would include: Starter, Bronze, Silver, Gold, Platinum and Diamond.
- Paid-as Rank:** A weekly status a distributor earns based on structure, volume and active status of a member's team. This weekly status determines the maximum commissions paid for the week.
- Lifetime Rank:** A status or highest rank a distributor has earned in their career with LifeWave.

# FAQs

Q: When I purchased an enrollment kit (Starter through Diamond), I thought I had reached a rank with the same title. How do I reach a paid-as rank of Starter through Diamond?

A. When you purchased an enrollment kit, you were assigned an enrollment title and not a rank. This enrollment title dictates how much PIB you can earn when you enroll distributors. When you purchase a Diamond kit, you can earn PIB at the highest level for the first 14 weeks. Following that 14 weeks, you will be paid PIB based on your enrollment title OR your highest paid-as rank.

Q: If I have an enrollment title of Bronze through Diamond but have not yet earned an official rank, am I eligible to earn binary commissions?

A. If you have not yet achieved an official rank and/or you are not currently reaching a paid-as rank of Manager or above, you are eligible to earn binary commissions. However, the most you can earn per week is \$100 (or two cycles).

Q: If someone enrolls as a Diamond and they then qualify to be paid as a Sr. Director for PIB for 14 weeks, will they also be paid as a paid-as Sr. Director for Binary commission?

A. No, the 14-week Sr. Director status that a new member has access to when they enroll with a Diamond pack purchase does not qualify them as a paid-as Sr. Director for Binary Commissions or Matching Bonus.

Q: With these enhancements, I am told I must be paid-as a rank each week. How can I be a paid-as Bronze through Diamond? Is it possible for me to earn this rank each week?

A. An enrollment title is something that can only happen once (upon enrollment or when a member upgrades). That said, each week you will not need or be able to qualify as a paid-as Enrollment Rank. Until you are a paid-as Manager or above, you are limited to two cycles and will be paid as an Enrollment title distributor.

Q: The highest rank I have earned is Director; however, I typically qualify as a Manager each week. Is my weekly binary commissions check based on the highest rank I have earned or what I qualify at each week?

A. Your weekly binary maximum payout is based on the rank you qualify as or your “paid-as” rank each week.

Q: With matching bonuses, is the only requirement to earn level 1, 2 and 3 now that I am a Manager or above?

A. No, while we are adding the requirement of Manager or above as a qualification for earning matching bonuses, all other established qualifications for each level of matching bonus are still in place.

Q: What happens to BV that isn't cycled because of the paid-as rank cap?

A. Volume in both power and profit legs are removed once it matures to over 52 weeks old.

Q: How do I know what my paid-as rank is each week and if I have any cyclable volume that could be removed?

A. We have multiple tools in the back office that can be used to help a member understand their paid-as rank weekly.

